
STANZI'S LATEST PROJECT – PEWTER CAST MEMBERSHIP BADGES

I've promised Nesta a few words about my latest projects for a while now – unfortunately my camera was plagued by dust and has only come home to me this week. So to catch up, this month I'll put in two projects that I've been working on since the start of the year.

Membership Badges

At the end of last year, the Baronial council decided that one way to make membership sexier was to allow people to display it. It was a nice gesture of thanks because without members, we don't have the SCA. I'd previously attended a soap stone and pewter casting class run by Sir Master Leofric Willoughby de Broke and had a bit of a play with other items so this was just going to be another fun adventure. Besides, period problem, period solution! (Except, I was going to use a gas ring to heat up my pewter pot!)



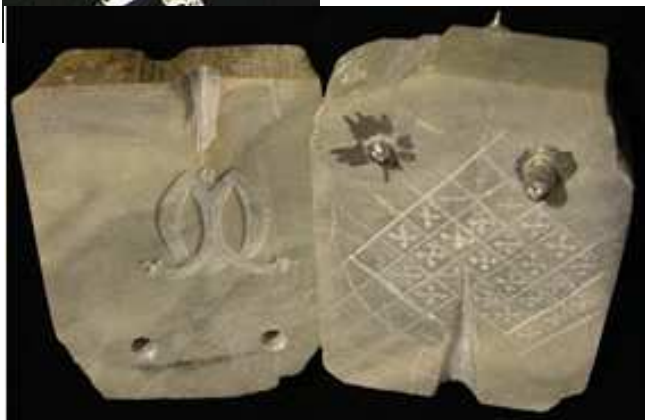
I'm lucky to have a copy of "Pilgrim Souvenirs and Secular Badges – Medieval finds from excavations in London" which is a part of the Museum of London Series (which every SCA household should have a copy!) I chose to base my design on style of a C15th pilgrims badge with the letter M – which in period was for Maria – but in this instance was going to mean MEMBER.



I wasn't happy with the Crown and it has certain meanings then that I didn't want on a Members Pilgrims badge. It also has SCA connotations as well. Besides, I looked annoying and fiddly. BOOO to fiddly. I also wanted to St Florianise it, so I added a Buttony Cross. I was pretty happy with this however I was aware that it was going to be a painful clean up because the jolly thing is fiddly.



After pouring only a couple, disaster struck! You can see here in that part of the soap stone broke away in the left middle part of the M and took some of my sanity with it. Soap stone has veins and these can crumble away and disintegrate. You can all imagine the Stanzicrankypants that ensued at this point. I don't think I've got a copy of the mould anymore because I probably threw it at the back wall! Oh dear. Back to the drawing board.



So I started again. I wasn't going to spend nearly as much time on it this time. I was cranky with the whole thing. So I modified the design to simplify it even further. This is what I ended up with.

Member badges have been distributed to members. They are currently held by the Seneschal. I still have the mould so if any more are needed, I can cast some up.

